



RREF5 192x40R



230V

50/60Hz

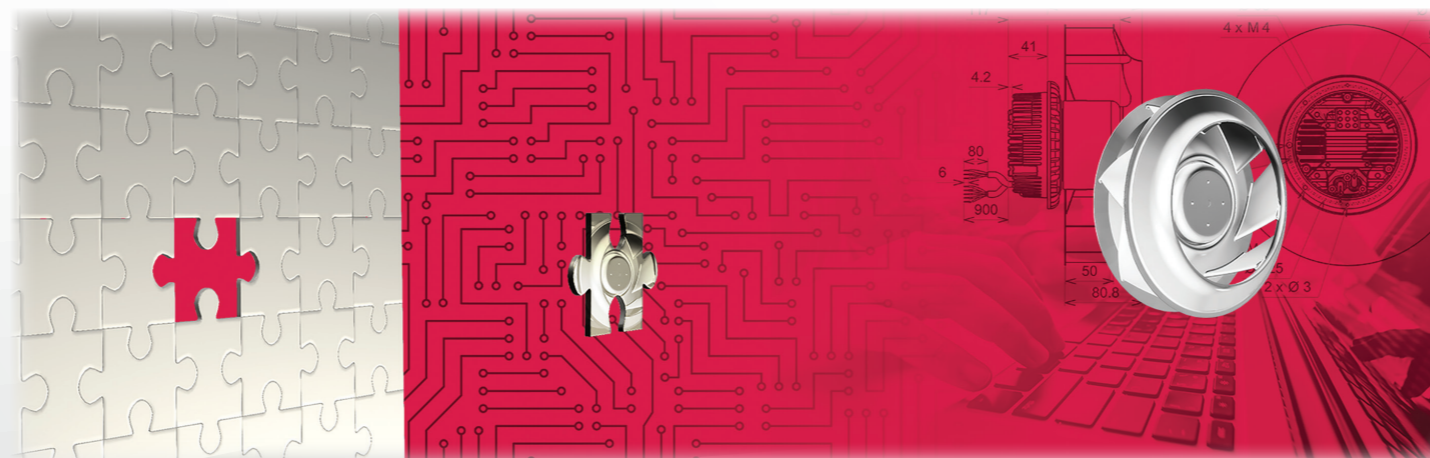
-20°C/+60°C

IP54

Various options available upon request, for example alarm output



ROSENBERG VENDÔME is part of the ROSENBERG Group. We design, manufacture and sell **ECOFIT** brand electric motors and fans applications since 1976.



Thanks to a good comprehension of your project, our 40 years **KNOW-HOW**, and our **ADDED VALUE** as technical support, we validate and optimize together a **CUSTOMIZED** solution meeting outstanding **QUALITY** standards.

Call us right from the beginning of your design!



VENDÔME
13 rue Marc Seguin - ZI Sud
F 41100 Vendôme - France
Tél: + 33 (0)2 54 23 14 54
Email: info@ecofit.com
www.ecofit.com



Imprimé le 2 février 2024

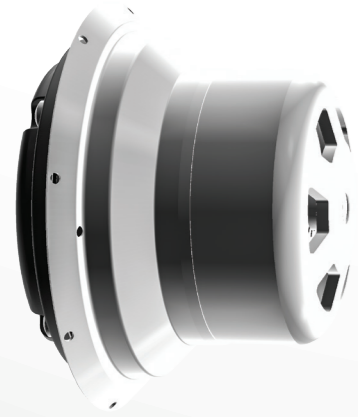


NEW



RREF5 192x40R

RREF5 192X40R: THE EC VENTILATION EFFICIENCY IN A COMPACT CONSTRUCTION

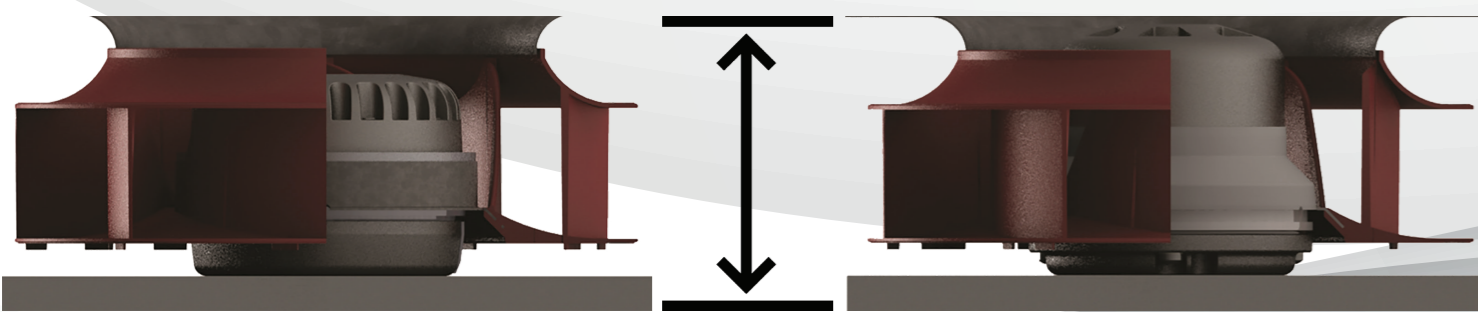


COMPACT CONSTRUCTION F5 MOTOR

Easy replacement of an AC motorized wheel by an EC F5 motorized wheel:

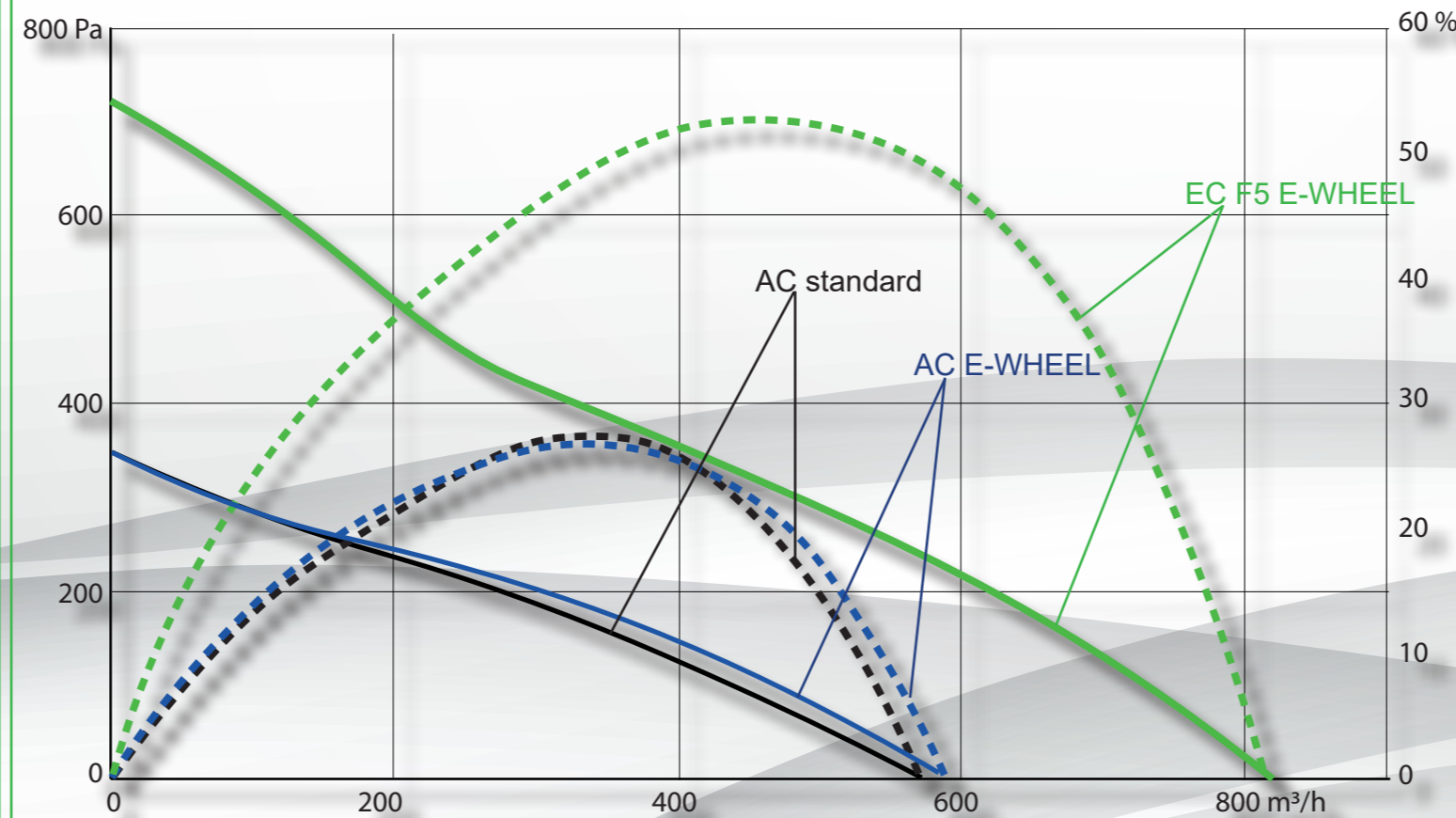
AC MOTORIZED WHEEL

EC F5 MOTORIZED WHEEL



Diversity	<ul style="list-style-type: none"> • 230V (CE; UL) • 120V (UL)
Frequency	<ul style="list-style-type: none"> • 50/60Hz
Power	<ul style="list-style-type: none"> • Up to 85W
Protection level	<ul style="list-style-type: none"> • IP54
Speed control	<ul style="list-style-type: none"> • 0-10VDC • PWM • Potentiometer 10 or 100 Kohms • Integrated +10VDC output • Tachy output as standard, alarm output upon request
Acoustic level	<ul style="list-style-type: none"> • Very low magnetic noise
Working Temperature	<ul style="list-style-type: none"> • -20°C / +60°C

VENTILATION EFFICIENCY PERFECT COMBINATION OF E-WHEEL AND EC TECHNOLOGIES



- Higher speeds than an AC motor and higher airflow for a very high efficiency, optimized power consumption and lower running costs
- Adapted speed control, chosen components and design for a better acoustic comfort
- Optimized power consumption, no losses by slippage and performant piloting to comply

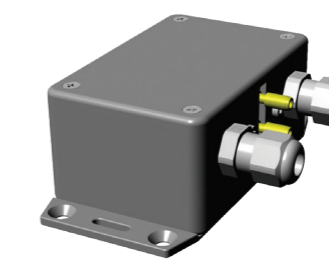
European ErP directive (efficiency grade: N=67)

- Worldwide use regardless of the power grid available
- Customized solution: Tachy output as standard, alarm output upon request, special design for your application, micro-Processor Program "à la carte" (speeds, electric power consumption, noise level...)
- Optimized maintenance of your application: Real time info of the operating status to reduce the Project Life Cycle Cost



- Specially designed blades for a very high efficiency, optimized power consumption and lower running costs
- Reduced noise level from 3 to 5 dBA for a better acoustic comfort
- Optimized power consumption to comply European ErP directive (efficiency grade: N=67)

ECOFIT FAN REGULATOR



With the regulator, you also get the possibility to drive the motorized wheel in constant pressure or constant airflow.

